



PLOT 6SP - REGAL WINDSOR (un-used)

- 38ft x 12 ft - 2 bedrooms
- central heating and double glazing
- quality holiday home
- situated on cul de sac road
- overlooks green paddock
- designed specifically for this plot
- quality kitchen with washing machine
- very large south facing bay windows
- ample lounge relaxing seating
- brick built shed; new veranda

















TICE

Best during
the day
to work out of
the house.
For your
convenience,
the kitchen is
equipped.

DO NOT LIFT BY HANDLES





Please only close these doors to move out of alignment. For your convenience the hinges are adjustable.

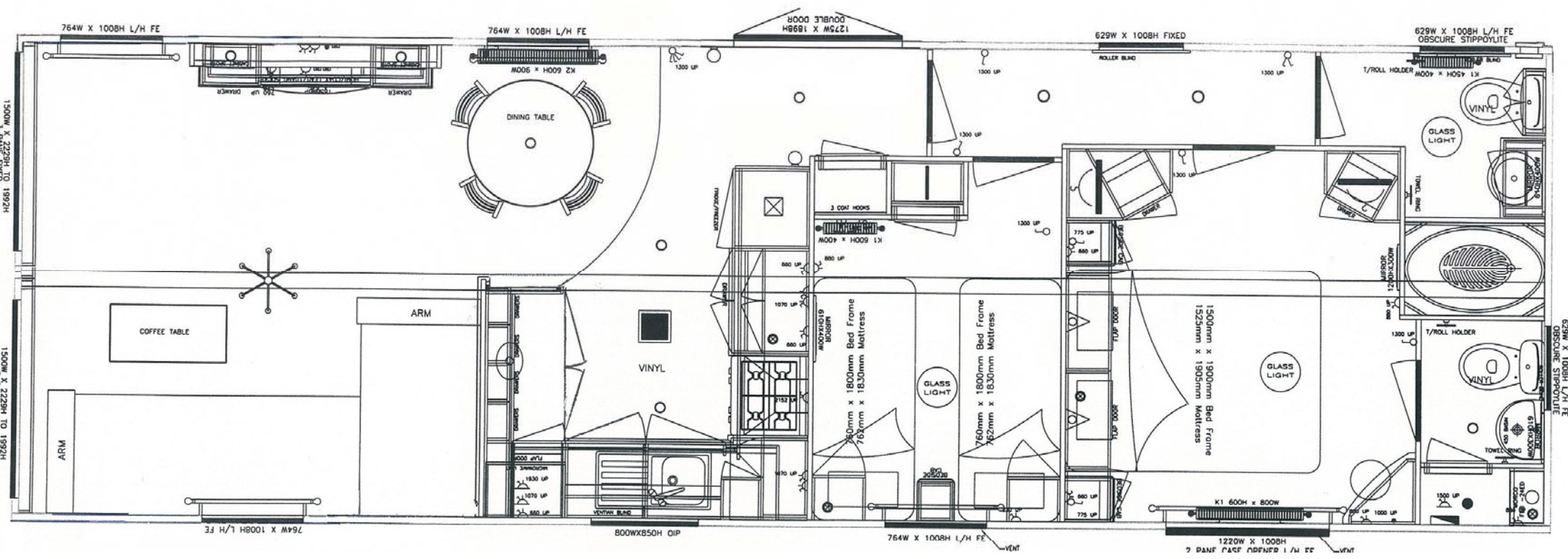


NEW
ACTIVATE
YOUR FREE
WARRANTY
CALL
08444 010 215









1500W X 2225H TO 1992H
3 PANEL FIXED

1500W X 2225H TO 1992H
3 PANEL FIXED

629W X 1008H L/H FE
OBSCURE STIPPOLITE